

SOUTH PACIFIC DIVISION MAP AND DRAWING STANDARDS

Alyssa Schaff
Regulatory Project Manager
Utah Regulatory Section
March 14, 2024



U.S. ARMY



US Army Corps
of Engineers®



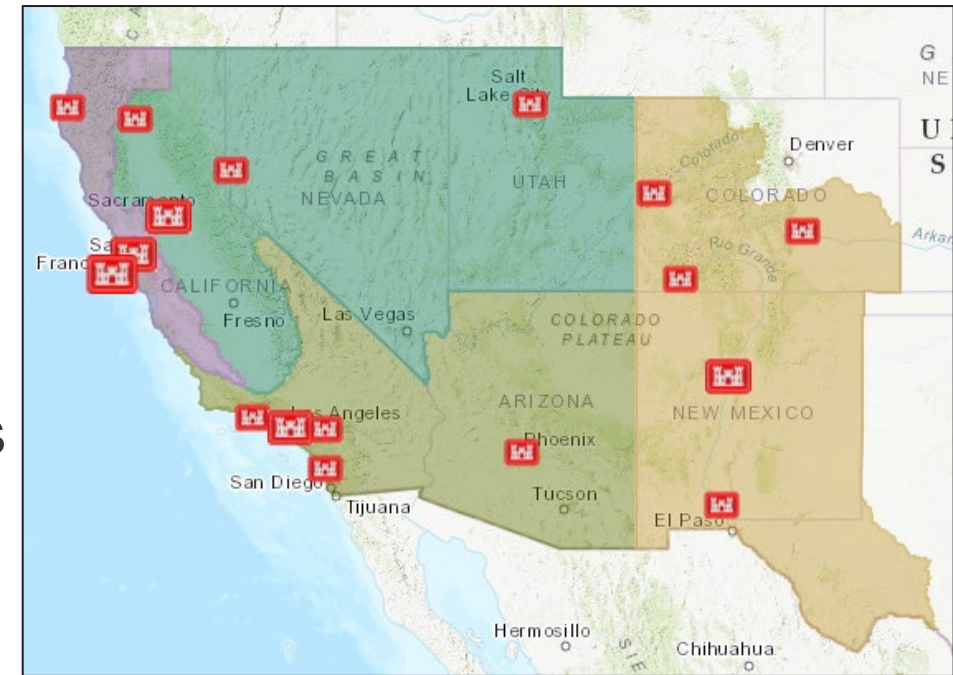
U.S. ARMY

OVERVIEW

2



- Applies to the South Pacific Division (SPD)
Regulatory Program: Sacramento, San Francisco, Los Angeles, and Albuquerque Districts
- Published on February 10, 2016
- Standards apply to all maps and drawings
- Goals:
 - Improve the quality and consistency of submissions
 - Simplify and improve review and processing
 - Increase timeliness and reduce the need for additional information requests





U.S. ARMY

MAP AND DRAWING SUBMISSIONS

3



- Required submissions:
 - Location (vicinity) map
 - Aquatic resource (AR) delineation map
- Additional requirements for permit requests figures:
 - Direct/indirect impacts overlaid on delineation map
 - Plan view and cross-sectional drawings
 - Mitigation plan
 - Post-construction drawings (as-built plans)
- Highly recommended; may be required by the Corps:
 - LiDAR (high quality topo) Maps
 - Flow path Maps
 - GIS data/Shapefiles



U.S. ARMY

MAP STANDARDS

4



- Orientation for maps must be consistent (typically North will be at top of page)
- Reference elevation datum
- Legend
- Aerial Photos
 - Orthorectified
 - Date that photo was taken
 - Imagery source
 - Topography
 - Aerials showing max visibility of AR (e.g. wet season)
- For large project areas, provide overview map and map/plate set



U.S. ARMY

DRAWING STANDARDS

5



- **Do include:**

- Map preparer name
- Signature
- Company/agency
- Date prepared and revised
- Drawing title
- Total number of sheets
- Legend on each map

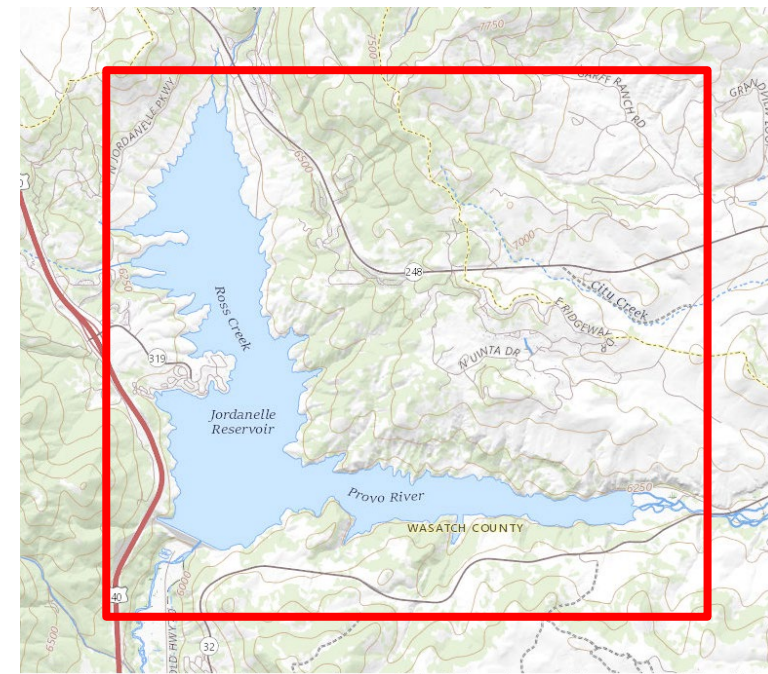
- **Avoid:**

- Irrelevant info on drawings
 - ex. activities that do not require authorization
- Cluttered drawings; keep drawings clear and legible



LOCATION (VICINITY) MAP(S)

- Use an accurate map that is clear and best shows the project area
 - Ex. USGS 7.5-minute quadrangle, Google Earth aerial w/ labels, etc.
- Include quadrangle source name
- Outline project boundary
- Include commonly recognizable landmarks and nearby roads
- North arrow





U.S. ARMY

AQUATIC RESOURCE (AR) DELINEATION MAPS



- Outline survey area boundary
- Show location and extent of any areas that meets the AR criteria
 - Indicate boundary or ordinary high water mark (OHWM)
 - Each AR should be clearly annotated and symbolized to easily differentiate
 - Name examples: W1, W2, S1, S2, etc.
 - Ensure you separate by wetland or stream type



U.S. ARMY

AR DELINEATION MAPS CONT.

8



- Indicate locations of data and photo points and label according to sample point number, photo number, or OHWM point
 - Numbers/labels should be offset; clearly identifiable
- Overlay topographic contour lines
- Indicate other relevant features
 - Culverts
 - Upland swales
 - Linear features with no OHWM
- Note: Do not use jurisdictional labels on maps or in delineation report



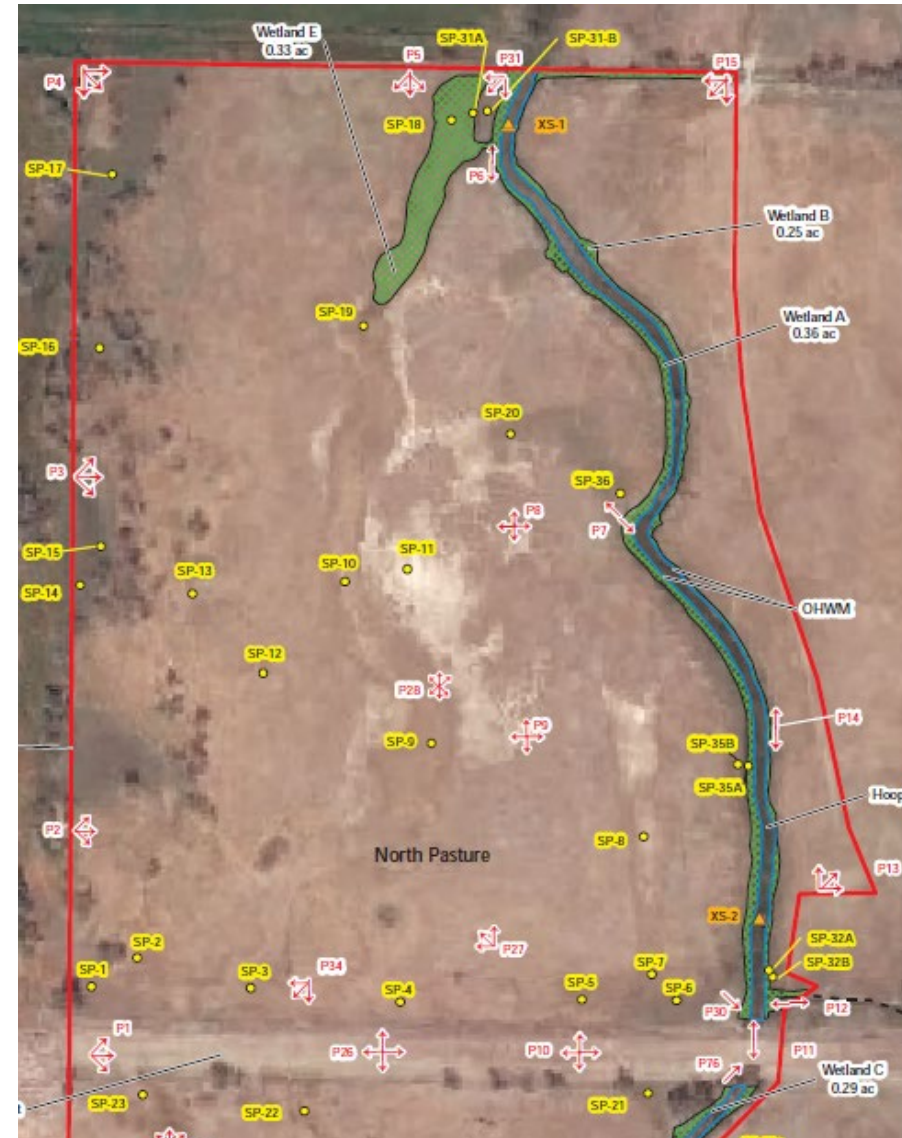
U.S. ARMY

GROUND PHOTOGRAPH MAPS

10



- Ground photos must be accompanied by a map of photo points
- Each photo point should be labeled with unique name and compass direction (arrows or labels such as P1-NW)
- Photos without a map, direction, or label are not helpful





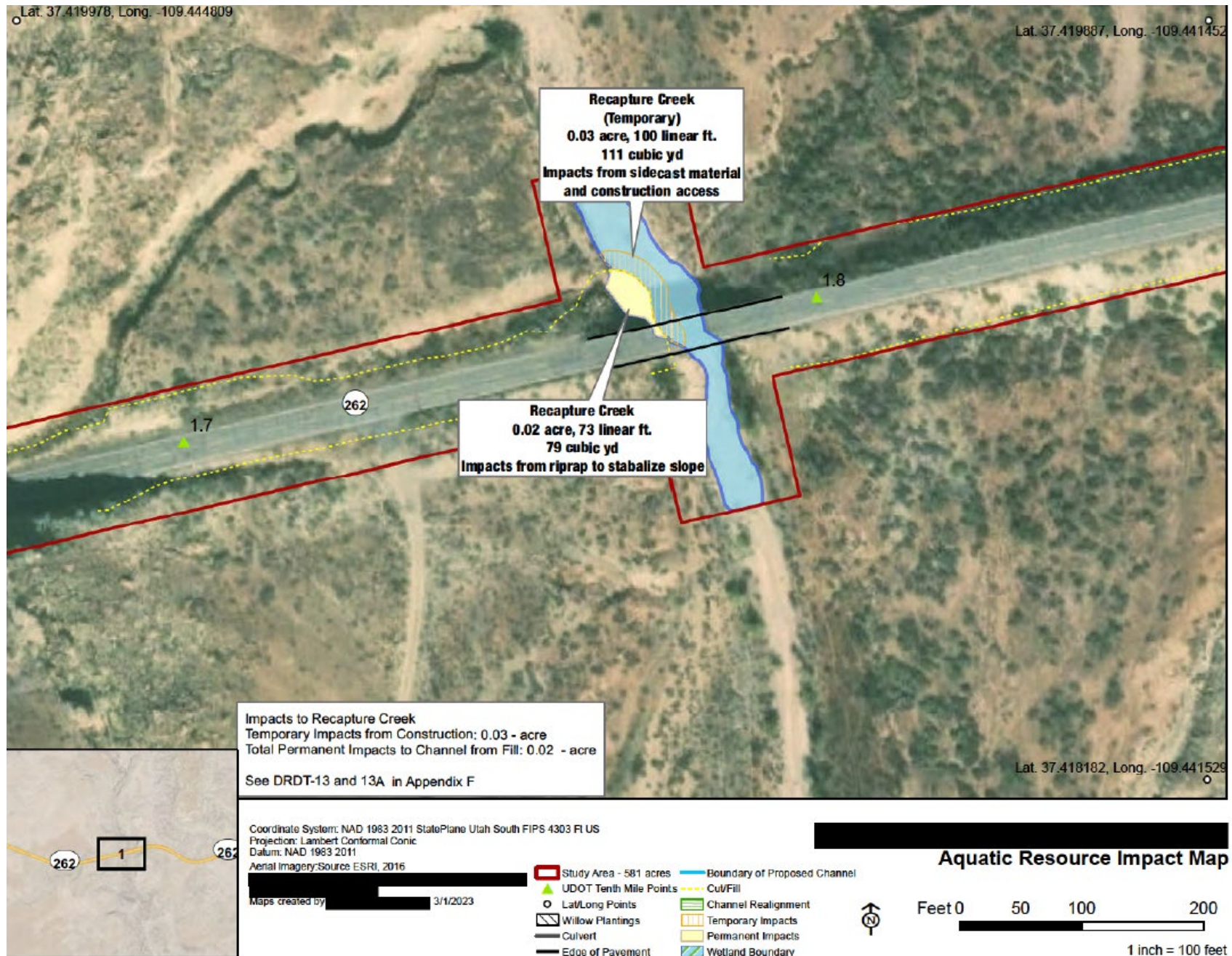
U.S. ARMY

PROPOSED PROJECT DRAWINGS

- Project plans must be overlaid on AR delineation map
 - Identify/label OHWM or boundaries on all maps
 - Project area
 - Staging and disposal areas
 - Access routes/temporary roads
 - Dewatering locations
 - Proposed mitigation sites, etc.
- Show all proposed fills, structures, and limits of work
 - Annotate whether permanent or temporary
- All impact areas within ARs must be labeled with unique name
 - ex. Cofferdam1, BoxCulvert1, AccessRoad1, etc.



U.S. ARMY





PLAN VIEW AND CROSS-SECTIONAL DRAWINGS



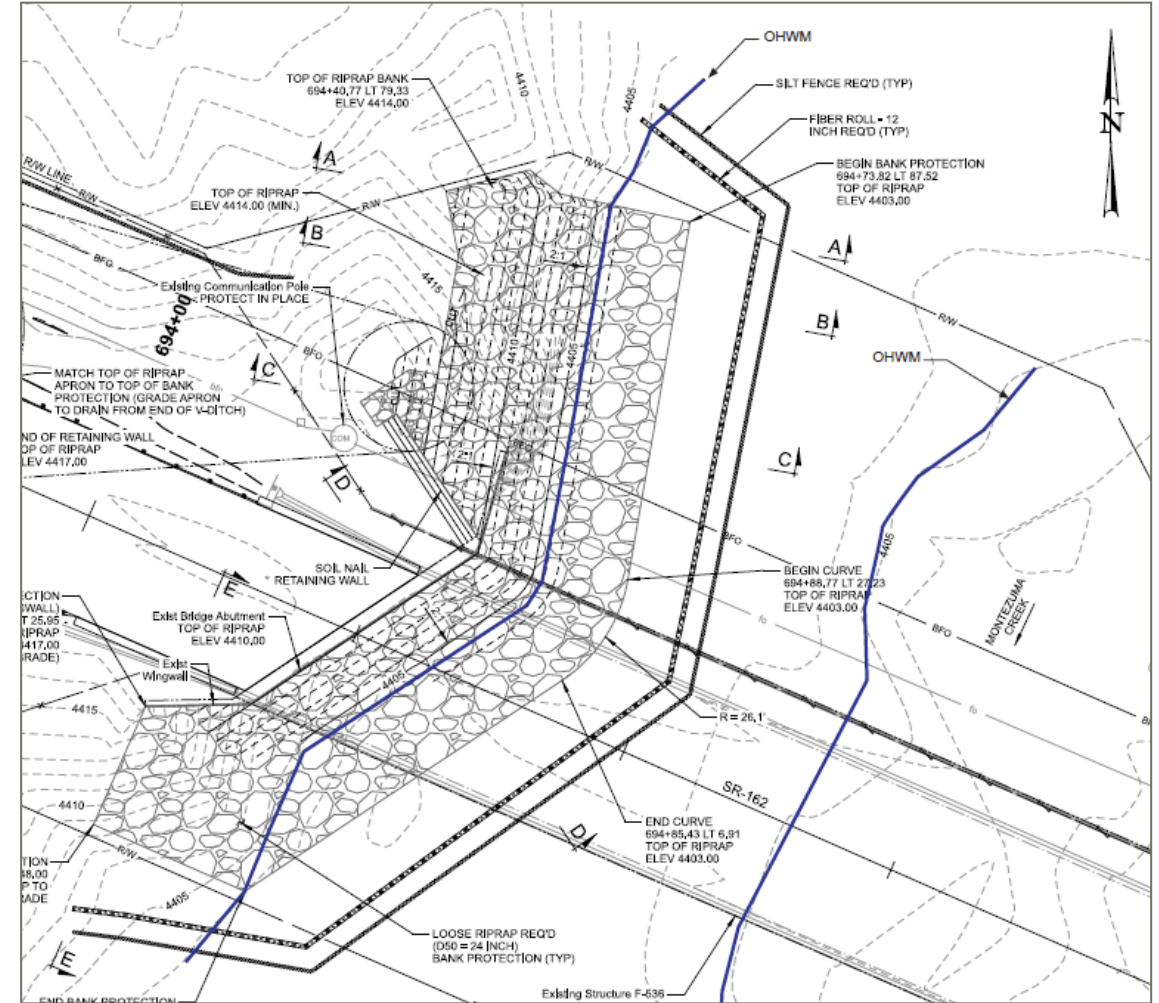
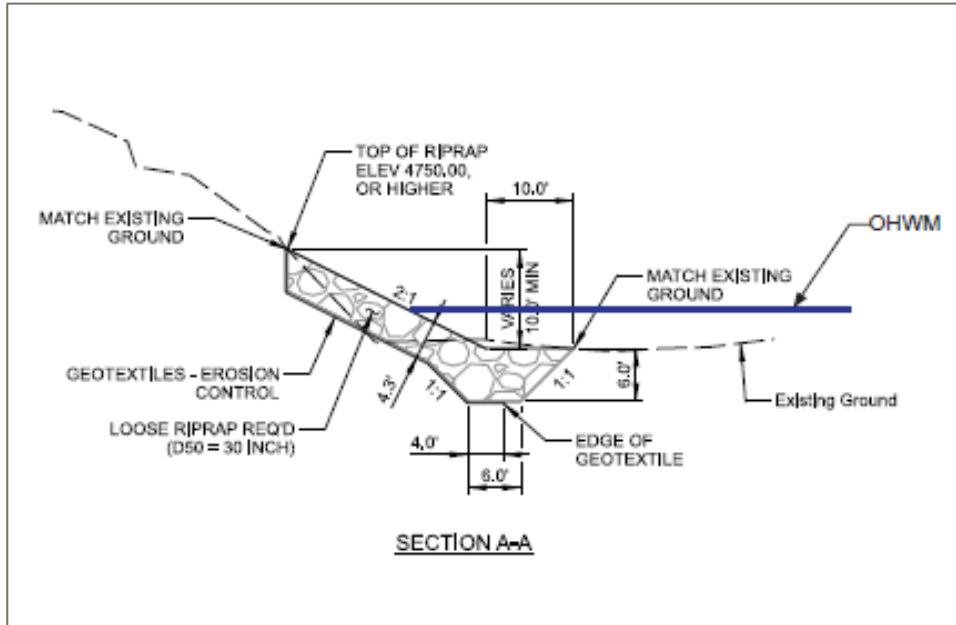
- Submitting both plan view and cross-sectional drawings is required
- North arrow
- Bar and text scale (e.g., 1 inch = 250 ft) not to exceed 1 inch = 400 ft
- Show impacts relative to OHWM or AR boundaries
 - For cross-sectional drawings:
 - Any change in OHWM due to activities, must show existing & proposed OHWM
 - Show subsurface infrastructure such as utility lines, drains, and groundwater impacts if expected
 - Show location of cross-section on the plan view map



U.S. ARMY

PLAN VIEW AND CROSS-SECTIONAL EXAMPLES

14





U.S. ARMY

COMPENSATORY MITIGATION PLANS

15



- Plan view and cross-sectional drawings
- Mitigation areas must be clearly differentiable based on type of AR and type of mitigation activity/treatment
- All mitigation sites must be clearly labeled with a unique name (ex. WetEstab1, StrmEnhance1, etc.)
- Mitigation sites must be shown relative to landscape features and habitat types
- Need to include monitoring and transect locations



U.S. ARMY

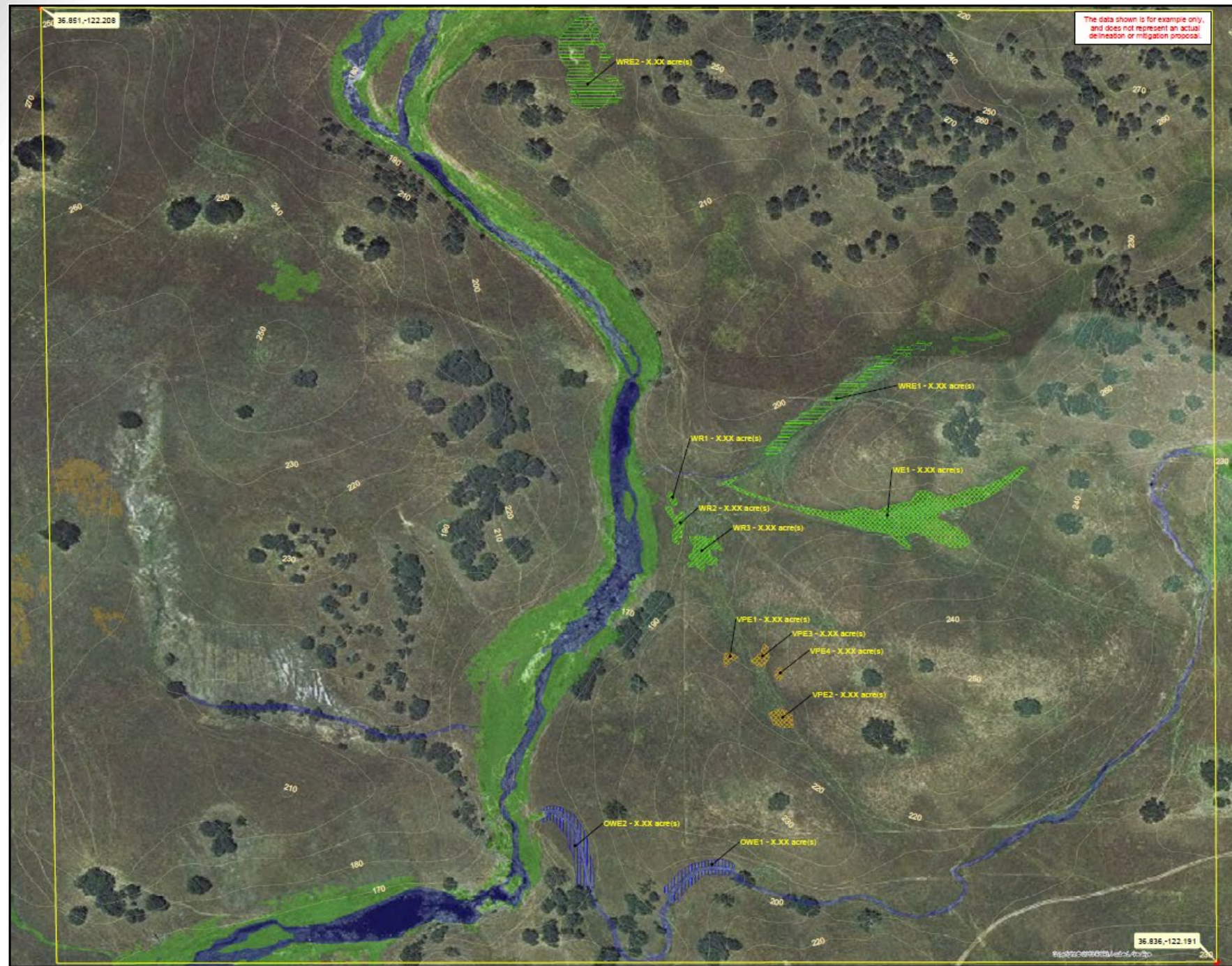


Figure X:
Mitigation Plan and
Long-term Preservation Map for the
Hypothetical Mitigation Project Site

Legend

- Project/Preserve Boundary (X.XX Acres)
- Topography (10-foot Contour Interval)
- Map Reference Point

Pre-project Delineation

Waters Type

- Open Water (X.XX acres)
- Vernal Pool (X.XX acres)
- Wetland (X.XX acres)

Proposed Mitigation

Mitigation Type

- Open Water Enhancement (X.XX Acres)
- Vernal Pool Establishment (X.XX acres)
- Wetland Establishment (X.XX acres)
- Wetland Re-establishment (X.XX acres)
- Wetland Rehabilitation (X.XX acres)



250 125 0 250
Feet

Coordinate System: NAD 1983 UTM Zone 10N
Projection: Transverse Mercator
Datum: North American 1983
Vertical Datum: NAVD88, U.S. Feet
1 inch = 250 feet

Created on April 30, 2013
Revised on February 8, 2016

Made in accordance with the
*Updated Map and Drawing Standards for the
South Pacific Division Regulatory Program*,
as amended on February 10, 2016, by:
Jason Deters, Project Manager
Enforcement and Special Projects Unit
U.S. Army Corps of Engineers
South Pacific Division
Sacramento District, Regulatory Division
1325 J Street, Room 1350
Sacramento, California 95814-2922





U.S. ARMY

17



WHERE TO FIND OUR STANDARDS

- <https://www.spk.usace.army.mil/Missions/Regulatory/>
- Under Quick Reference on the left side

The screenshot shows the Sacramento District Regulatory website. The left sidebar contains a 'Quick Reference' section with a red arrow pointing to it. The main content area is titled 'The Regulatory Program' and includes text about the program's history and purpose. Below the text are three icons: a telephone for 'Contact Your Local Office', a checklist for 'Take our Customer Survey', and a clipboard for 'Report a Violation'. At the bottom, there is a section titled 'We Are Paperless' with a link to 'Pre-Application Meeting and Jurisdictional Determinations'.

Quick Reference

- Application Form (ENG 4345)
- NWP Information
- Delineation Minimum Standards
- Request for Aquatic Resources Delineation
- Verification or Jurisdictional Determination
- Map and Drawing Standards**
- Pre-application Meetings for California
- Pre-application Meetings for Utah
- Regulatory Guidance Letters
- Federal Regulations
- Video Library
- Cultural Resources Guidelines
- Endangered Species Guidance

The Regulatory Program

The Department of the Army's Regulatory Program is one of the oldest in the federal government. Initially, it served a simple purpose: to protect and maintain the navigable capacity of the nation's waters. Changing public needs, evolving policy, court decisions and new statutory mandates have changed several aspects of the program including its breadth, complexity and authority.

The U.S. Army Corps of Engineers, through the Regulatory Program, administers and enforces Section 10 of the Rivers and Harbors Act of 1899 (RHA) and Section 404 of the Clean Water Act (CWA). Under RHA Section 10, a permit is required for work or structures in, over or under navigable waters of the United States. Under CWA Section 404, a permit is required for the discharge of dredged or fill material into waters of the United States. Many waterbodies and wetlands in the nation are waters of the United States and are subject to the Corps' regulatory authority.

The Regulatory Program is committed to protecting the Nation's aquatic resources and navigation capacity, while allowing reasonable development through fair and balanced permit decisions. The Corps evaluates permit applications for essentially all construction activities that occur in the Nation's waters, including wetlands.

Contact Your Local Office

Take our Customer Survey

Report a Violation.

We Are Paperless

[Pre-Application Meeting and Jurisdictional Determinations](#). New requests for a pre-application meeting or jurisdictional determination should be submitted through the Regulatory Request System (RRS) at rrs.usace.army.mil. See announcement under Latest News.

RRS REGULATORY REQUEST SYSTEM

QUESTIONS



U.S. ARMY



US Army Corps
of Engineers®